



# Certificate of Analysis

QA SAMPLE - INFORMATIONAL ONLY

1 of 3

ICAL ID: 20220512-009  
Sample: CA220512-005-011  
MOTIVATE  
Strain: MOTIVATE  
Category: Concentrates & Extracts

Firebird Touch Therapy  
Lic. #  
Lakeside, CA 92040  
Lic. #

Batch#: 700  
Batch Size Collected:  
Total Batch Size:  
Collected: 05/16/2022; Received: 05/16/2022  
Completed: 05/16/2022

Moisture NT Water Activity NT	Total THC <b>57.79%</b>	Total CBD <b>0.17%</b>	Total Cannabinoids <b>64.00%</b>	Total Terpenes <b>61.398 mg/g</b>
--	----------------------------	---------------------------	-------------------------------------	--------------------------------------

Summary	SOP Used	Date Tested	Complete
Batch			Complete
Cannabinoids	POT-PREP-001	05/14/2022	Complete
Terpenes	TERP-PREP-001	05/16/2022	Complete



Scan to see results

## Cannabinoid Profile

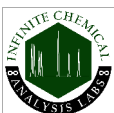
Analyte	LOQ (mg/g)	LOD (mg/g)	%	mg/g	Analyte	LOQ (mg/g)	LOD (mg/g)	%	mg/g
THCa	0.3680	0.0924	ND	ND	CBDV	0.3680	0.0421	ND	ND
Δ9-THC	0.3680	0.1024	57.79	577.9	CBN	0.3680	0.0780	1.48	14.8
Δ8-THC	0.3680	0.0506	0.20	2.0	CBGa	0.3965	0.1322	ND	ND
THCV	0.3680	0.0423	ND	ND	CBG	0.3920	0.1307	3.17	31.7
CBDa	0.3680	0.0951	ND	ND	CBC	0.4549	0.1516	1.20	12.0
CBD	0.3680	0.0815	0.17	1.7	<b>Total THC</b>			<b>57.79</b>	<b>577.88</b>
					<b>Total CBD</b>			<b>0.17</b>	<b>1.67</b>
					<b>Total</b>			<b>64.00</b>	<b>639.95</b>

Total THC=THCa \* 0.877 + Δ9-THC; Total CBD = CBDa \* 0.877 + CBD. LOD= Limit of Detection, LOQ= Limit of Quantitation, ND= Not Detected, NR= Not Reported. Potency is reported on a dry weight basis. Instrumentation and analysis SOPs used: Cannabinoids:UHPLC-DAD(POT-INST-005),Moisture:Moisture Analyzer(MOISTURE-001),Water Activity:Water Activity Meter(WA-INST-002), Foreign Material:Microscope(FOREIGN-001). Density measured at 19-24 °C, Water Activity measured at 0-90% RH. All QA submitted by the client, All CA State Compliance sampled using SAMPL-SOP-001.

## Terpene Profile

Analyte	LOQ (mg/g)	LOD (mg/g)	%	mg/g	Analyte	LOQ (mg/g)	LOD (mg/g)	%	mg/g
β-Caryophyllene	0.684	0.228	2.2795	22.795	Camphor	0.371	0.124	ND	ND
Linalool	0.154	0.030	1.2417	12.417	Cedrol	0.151	0.039	ND	ND
δ-Limonene	0.306	0.053	1.0253	10.253	cis-Nerolidol	0.264	0.088	ND	ND
β-Pinene	0.306	0.020	0.5710	5.710	Citronellol	0.598	0.138	ND	ND
α-Humulene	0.151	0.032	0.3685	3.685	δ-3-Carene	0.306	0.030	ND	ND
α-Bisabolol	0.162	0.054	0.1980	1.980	Eucalyptol	0.221	0.074	ND	ND
Caryophyllene Oxide	0.602	0.129	0.1372	1.372	Fenchone	0.151	0.010	<LOQ	<LOQ
α-Terpineol	0.154	0.049	0.0995	0.995	γ-Terpinene	0.152	0.033	ND	ND
Fenchol	0.152	0.029	0.0832	0.832	Geraniol	0.609	0.138	ND	ND
(-)-Guaiaol	0.154	0.033	0.0589	0.589	Geranyl Acetate	0.151	0.020	ND	ND
β-Myrcene	0.153	0.017	0.0552	0.552	Isoborneol	0.151	0.022	ND	ND
Borneol	0.154	0.027	0.0218	0.218	Menthol	0.170	0.057	ND	ND
α-Cedrene	0.151	0.029	ND	ND	Pulegone	0.178	0.059	ND	ND
α-Pinene	0.151	0.028	<LOQ	<LOQ	p-Cymene	1.068	0.356	ND	ND
α-Terpinene	0.151	0.045	ND	ND	Terpinolene	0.154	0.014	<LOQ	<LOQ
β-Eudesmol	0.192	0.064	ND	ND	trans-Nerolidol	0.230	0.077	ND	ND
Camphene	0.151	0.009	<LOQ	<LOQ	<b>Total</b>			<b>61.398</b>	<b>61.398</b>

NR= Not Reported (no analysis was performed), ND= Not Detected (the concentration is less than the Limit of Detection (LOD)). Analytical instrumentation used: HS-GC-MS; samples analyzed according to SOP TERP-INST-003.



Infinite Chemical Analysis Labs  
8312 Miramar Mall  
San Diego, CA  
(858) 623-2740  
www.infiniteCAL.com  
Lic# C8-000047-LIC

*Josh M Swider*

Josh Swider  
Lab Director, Managing Partner  
05/16/2022

Confident Cannabis  
All Rights Reserved  
support@confidentcannabis.com  
(866) 506-5866  
www.confidentcannabis.com



This product has been tested by Infinite Chemical Analysis, LLC using valid testing methodologies and a quality system as required by state law. All LQC samples were performed and met the prescribed acceptance criteria in 16 CCR section 15730, pursuant to 16 CCR section 15726(e)(13). Values reported relate only to the product tested. Infinite Chemical Analysis, LLC makes no claims as to the efficacy, safety or other risks associated with any detected or non-detected levels of any compounds reported herein. This Certificate shall not be reproduced except in full, without the written approval of Infinite Chemical Analysis, LLC.



# Certificate of Analysis

QA SAMPLE - INFORMATIONAL ONLY

2 of 3

ICAL ID: 20220512-009  
Sample: CA220512-005-011  
MOTIVATE  
Strain: MOTIVATE  
Category: Concentrates & Extracts

Firebird Touch Therapy  
Lic. #  
Lakeside, CA 92040  
Lic. #

Batch#: 700  
Batch Size Collected:  
Total Batch Size:  
Collected: 05/16/2022; Received: 05/16/2022  
Completed: 05/16/2022

## Residual Solvent Analysis

Category 1	LOQ	LOD	Limit	Status	Category 2	LOQ	LOD	Limit	Status	Category 2	LOQ	LOD	Limit	Status
------------	-----	-----	-------	--------	------------	-----	-----	-------	--------	------------	-----	-----	-------	--------

NR= Not Reported (no analysis was performed), ND= Not Detected (the concentration is less then the Limit of Detection (LOD)). Analytical instrumentation used: HS-GC-MS; samples analyzed according to SOP RS-INST-003.

## Heavy Metal Screening

LOQ	LOD	Limit	Status
-----	-----	-------	--------

NR= Not Reported (no analysis was performed), ND= Not Detected (the concentration is less then the Limit of Detection (LOD)). Analytical instrumentation used: ICP-MS; samples analyzed according to SOP HM-INST-003.

## Microbiological Screening

Limit	Result	Status
-------	--------	--------

ND=Not Detected. Analytical instrumentation used:qPCR; samples analyzed according to SOP MICRO-INST-001.



Infinite Chemical Analysis Labs  
8312 Miramar Mall  
San Diego, CA  
(858) 623-2740  
www.infiniteCAL.com  
Lic# C8-0000047-LIC

*Josh M Swider*

Josh Swider  
Lab Director, Managing Partner  
05/16/2022

Confident Cannabis  
All Rights Reserved  
support@confidentcannabis.com  
(866) 506-5866  
www.confidentcannabis.com



This product has been tested by Infinite Chemical Analysis, LLC using valid testing methodologies and a quality system as required by state law. All LQC samples were performed and met the prescribed acceptance criteria in 16 CCR section 15730, pursuant to 16 CCR section 15726(e)(13). Values reported relate only to the product tested. Infinite Chemical Analysis, LLC makes no claims as to the efficacy, safety or other risks associated with any detected or non-detected levels of any compounds reported herein. This Certificate shall not be reproduced except in full, without the written approval of Infinite Chemical Analysis, LLC.



# Certificate of Analysis

QA SAMPLE - INFORMATIONAL ONLY

3 of 3

ICAL ID: 20220512-009  
Sample: CA220512-005-011  
MOTIVATE  
Strain: MOTIVATE  
Category: Concentrates & Extracts

Firebird Touch Therapy  
Lic. #  
Lakeside, CA 92040  
Lic. #

Batch#: 700  
Batch Size Collected:  
Total Batch Size:  
Collected: 05/16/2022; Received: 05/16/2022  
Completed: 05/16/2022

## Chemical Residue Screening

Category 1	LOQ	LOD	Status	Mycotoxins	LOQ	LOD	Limit	Status
------------	-----	-----	--------	------------	-----	-----	-------	--------

Category 2	LOQ	LOD	Limit	Status	Category 2	LOQ	LOD	Limit	Status
------------	-----	-----	-------	--------	------------	-----	-----	-------	--------

### Other Analyte(s):

NR= Not Reported (no analysis was performed), ND= Not Detected (the concentration is less then the Limit of Detection (LOD)). Analytical instrumentation used: LC-MS-MS & GC-MS-MS; samples analyzed according to SOPs PESTMYCO-LC-INST-004 and PEST-GC-INST-003.



Infinite Chemical Analysis Labs  
8312 Miramar Mall  
San Diego, CA  
(858) 623-2740  
www.infiniteCAL.com  
Lic# C8-000047-LIC

*Josh M Swider*

Josh Swider  
Lab Director, Managing Partner  
05/16/2022

Confident Cannabis  
All Rights Reserved  
support@confidentcannabis.com  
(866) 506-5866  
www.confidentcannabis.com



This product has been tested by Infinite Chemical Analysis, LLC using valid testing methodologies and a quality system as required by state law. All LQC samples were performed and met the prescribed acceptance criteria in 16 CCR section 15730, pursuant to 16 CCR section 15726(e)(13). Values reported relate only to the product tested. Infinite Chemical Analysis, LLC makes no claims as to the efficacy, safety or other risks associated with any detected or non-detected levels of any compounds reported herein. This Certificate shall not be reproduced except in full, without the written approval of Infinite Chemical Analysis, LLC.